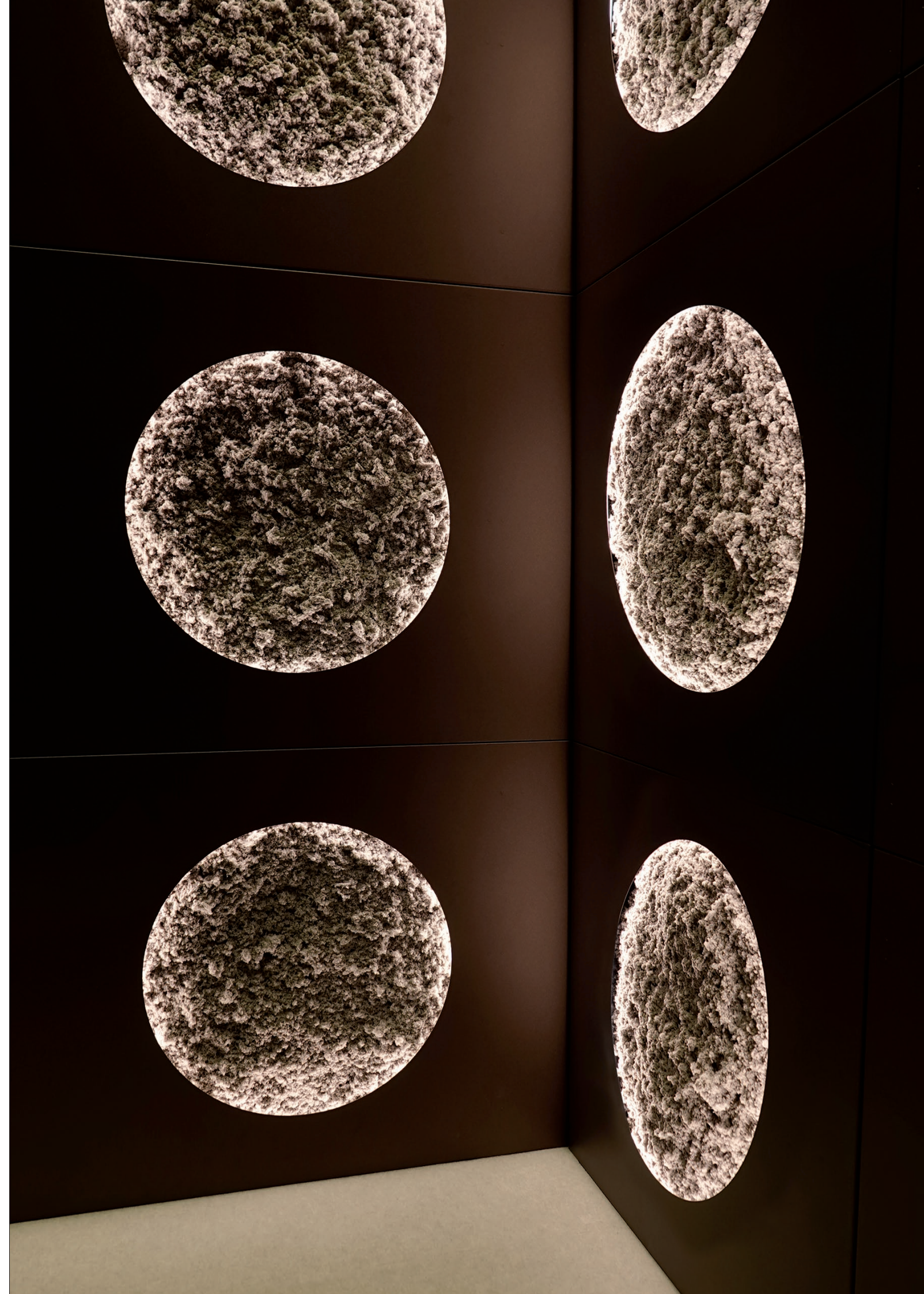


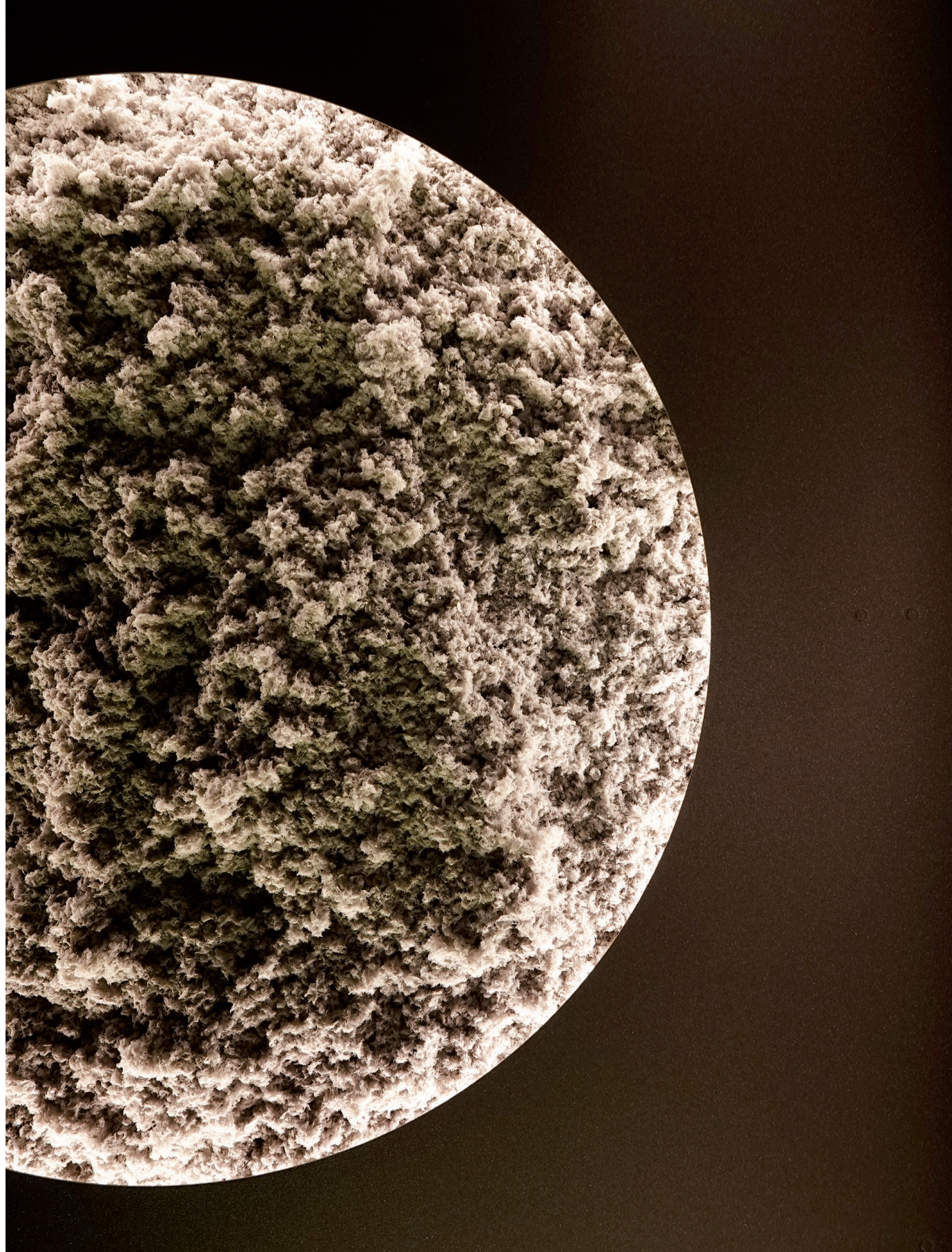
Foamy

Foamy

The Foamy Acoustic System embodies the essence of nature and soft illumination. This collection comprises wall, suspended and room divider panels, offered in a diverse range of colors. Its inner acoustic filling not only achieves carbon neutrality but also boasts breathability and biodegradability, ensuring top-notch sound absorption rated at A class. Each panel is gently lit by ambient light creating a soft and gentle atmosphere. These panels can be installed individually, suspended or integrated into a cohesive system for ceilings, walls.

Variants: wall, ceiling, suspended





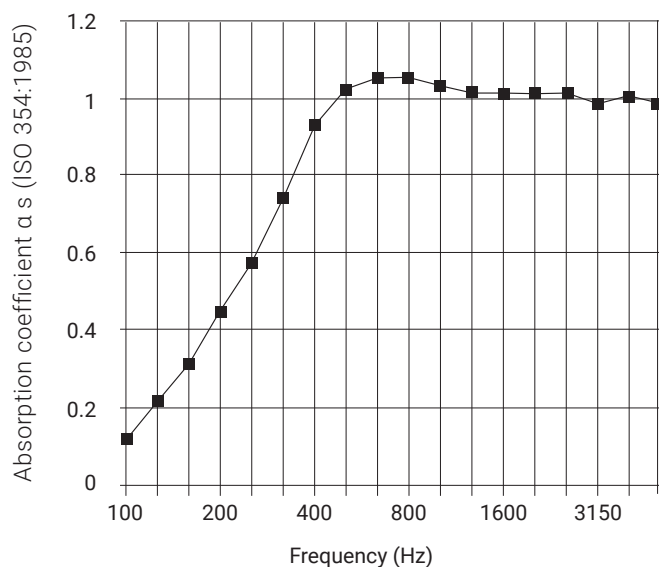
Acoustic



Foamy proves to be an exceptional tool for not only enhancing acoustic comfort but also for introducing a soothing ambiance with its gentle lighting. Its versatile panels offer

flexibility, allowing for mounting on walls, suspension from ceilings, or seamless combination to craft functional room dividers.

Determination of Sound Absorption and Classification



Weighted absorption coefficient, α_w : 0,9

Sound absorption class: A

Absorption classes: A, B, C, D, E and no classification

Technical Features

For Foamy acoustic filling, is carbon neutral, without using carbon offsets. The acoustic classification is selected according to the layer thickness. Our 35 mm acoustic filling provides Class A absorption.

Foamy acoustic filling 35 mm (acoustic class A).

Carbon neutral

Fire class B - s1, d0.

Foamy acoustic filling is M1 indoor air certified.

The material is breathable.

Environmental Product Declaration (EPD), EN 15804:2012+A1:2014.

EPDs according to the European standard EN 15804:2012+A1:2014 are voluntary, transparent and well established way to present fundamental and verified environmental information based on life cycle assessment about the environmental impacts of a product or product group.

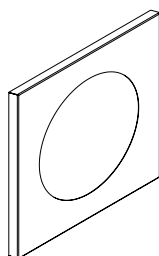
Standard colours



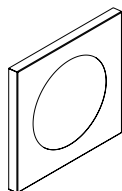
Dark Gray

Panels

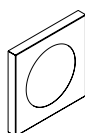
Filled with foamy acoustic material



1000 x 1000 x 70

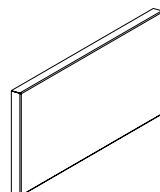


750 x 750 x 70

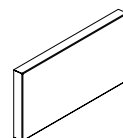


500 x 500 x 70

Metal complementary panel



1000 x 500 x 70

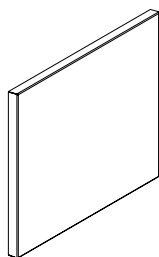


750 x 375 x 70

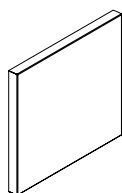


500 x 250 x 70

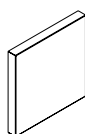
With metal front only



1000 x 1000 x 70

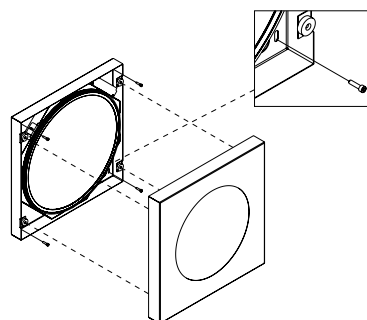


750 x 750 x 70



500 x 500 x 70

Simple installation process



Please contact us for further information.

Organic Lighting Poland

1 Maja 46a, 05-555 Tarczyn
Email: info@organiclighting.eu
www.organic.pl/en